

AUBERGE II

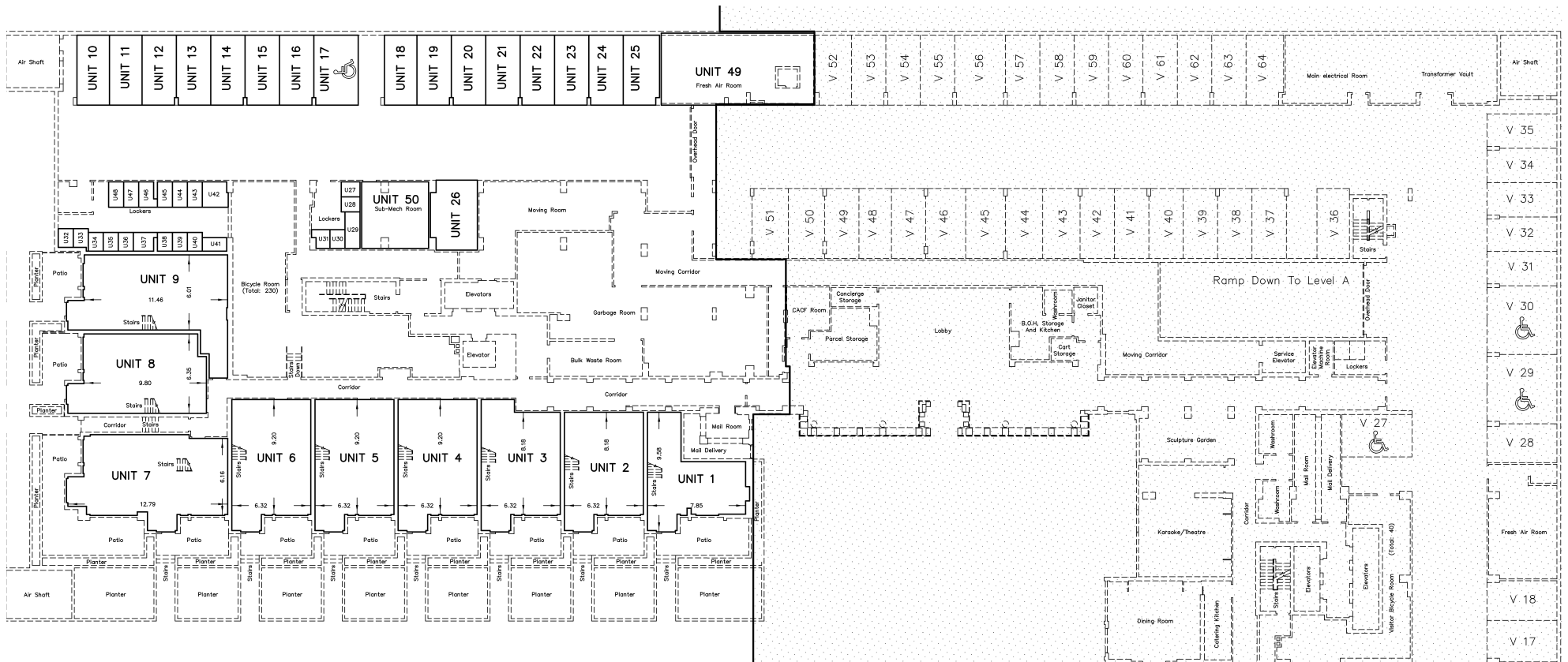
ON THE PARK®

TRIDEL
BUILT FOR LIFE

ROWNTREE
ENTERPRISES

Parking Units - Ground Floor

Units 10 - 26



This plan is provided for information purposes only. Parking & Locker unit locations are approximate and subject to change without notice. ©Tridel 2023. ®Tridel and design, "D" design, Tridel Built for Life and design, Built Green Built for Life and design are registered Trademarks of Tridel Corporation. Project names and logos are Trademarks of their respective owners. All rights reserved. Illustrations are artist's concept only. Specifications subject to change without notice. E.&O.E. June 2023

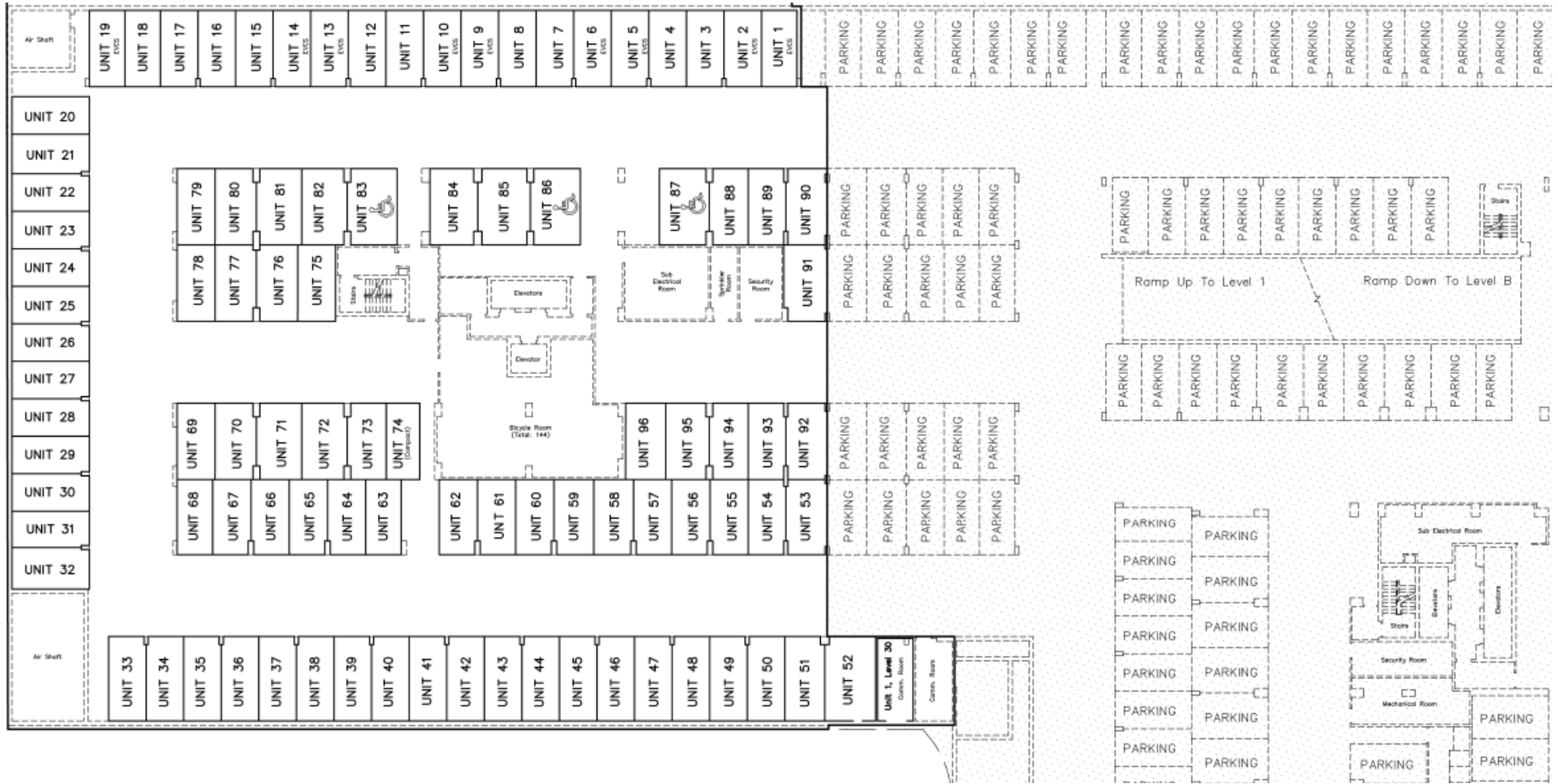
AUBERGE II

ON THE PARK®



Parking Units - P1 Level

Units 1 - 96



This plan is provided for information purposes only. Parking & Locker unit locations are approximate and subject to change without notice. ©Tridel 2023. ®Tridel and design, "D" design, Tridel Built for Life and design, Built Green Built for Life and design are registered Trademarks of Tridel Corporation. Project names and logos are Trademarks of their respective owners. All rights reserved. Illustrations are artist's concept only. Specifications subject to change without notice. E.&O.E. June 2023

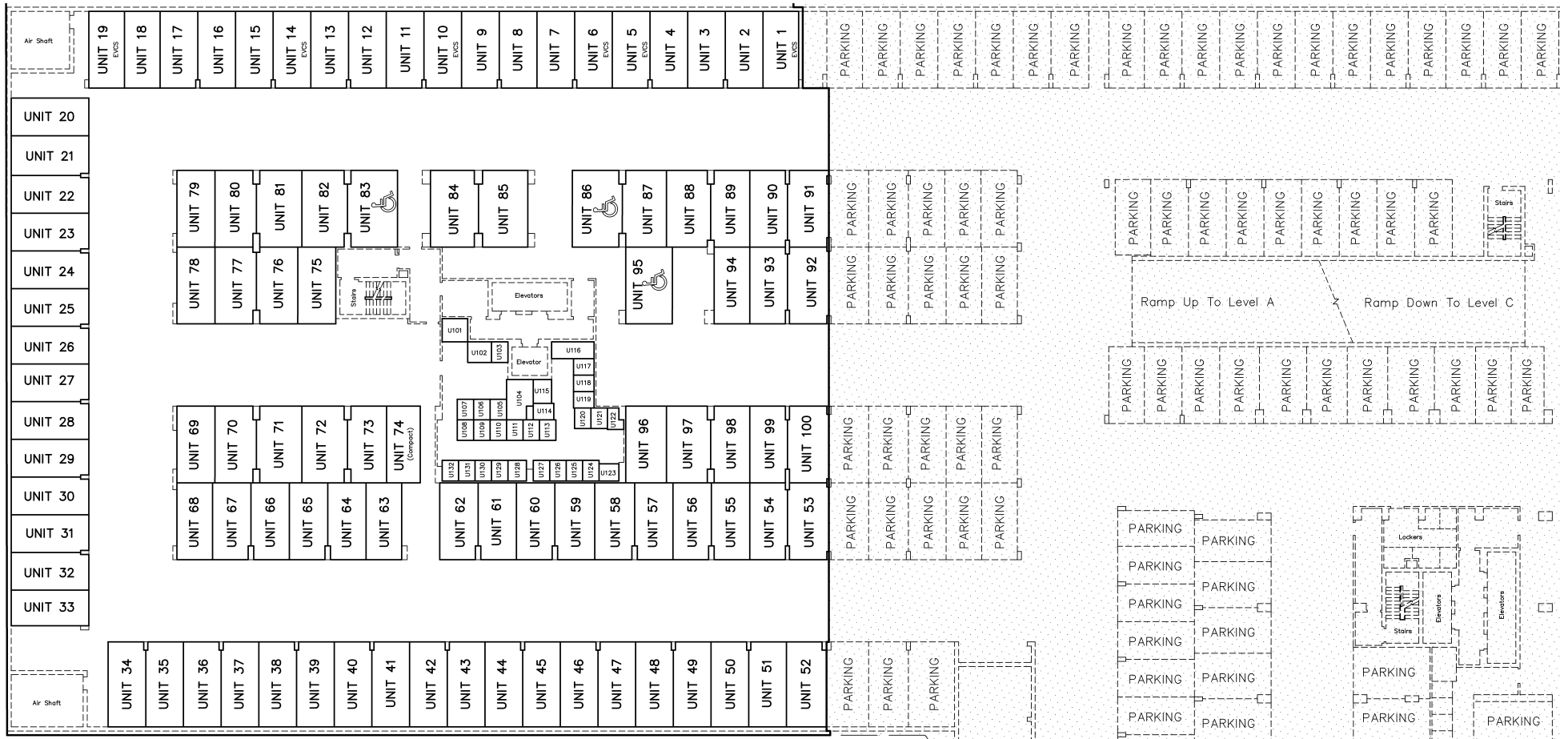
AUBERGE II

ON THE PARK®



Parking Units - P2 Level

Units 1 - 100



This plan is provided for information purposes only. Parking & Locker unit locations are approximate and subject to change without notice. ©Tridel 2023. ®Tridel and design, "D" design, Tridel Built for Life and design, Built Green Built for Life and design are registered Trademarks of Tridel Corporation. Project names and logos are Trademarks of their respective owners. All rights reserved. Illustrations are artist's concept only. Specifications subject to change without notice. E.&O.E. June 2023

AUBERGE II

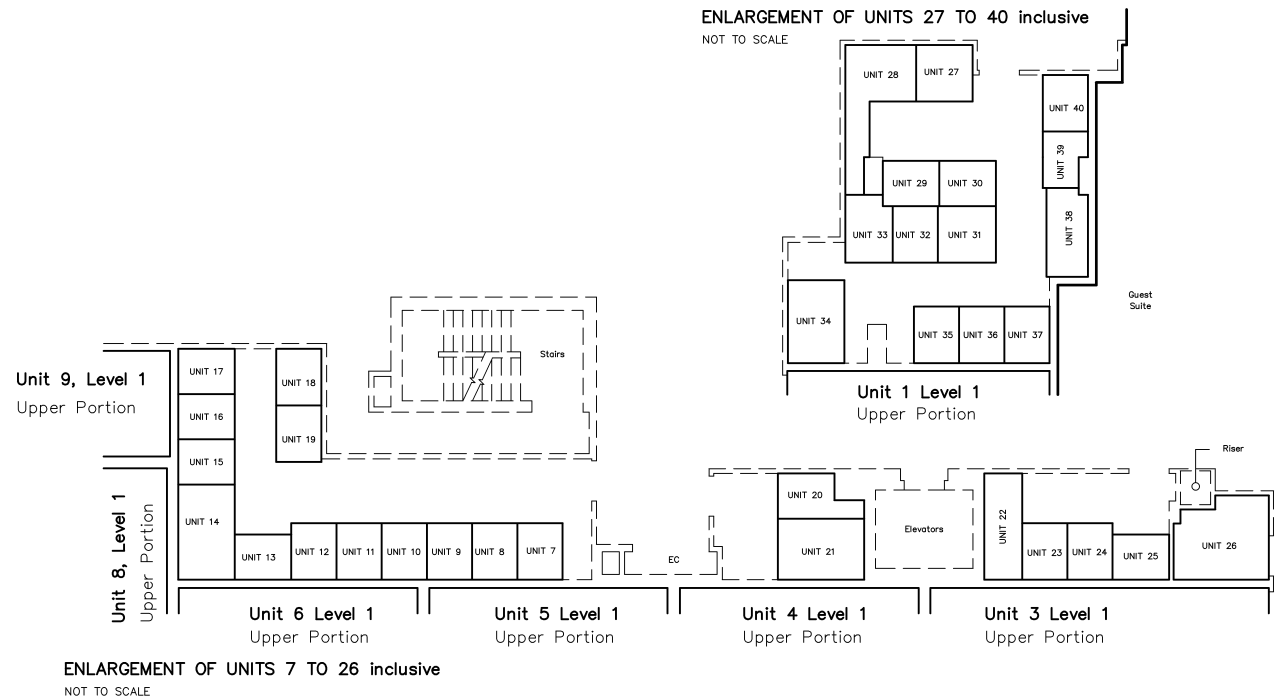
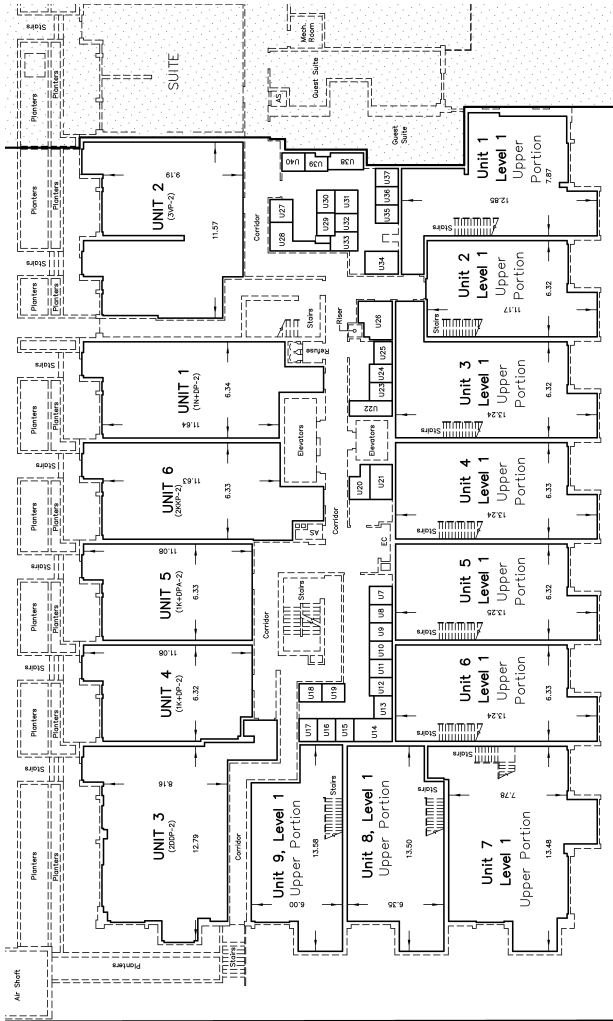
ON THE PARK®

TRIDEL®
BUILT FOR LIFE

ROWNTREE™
ENTERPRISES

Locker Units - 2nd Floor

Units 7 - 40



This plan is provided for information purposes only. Parking & Locker unit locations are approximate and subject to change without notice. ©Tridel 2023. ®Tridel and design, "D" design, Tridel Built for Life and design, Built Green Built for Life and design are registered Trademarks of Tridel Corporation. Project names and logos are Trademarks of their respective owners. All rights reserved. Illustrations are artist's concept only. Specifications subject to change without notice. E.&O.E. June 2023

AUBERGE II

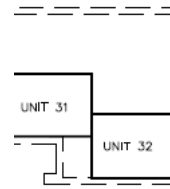
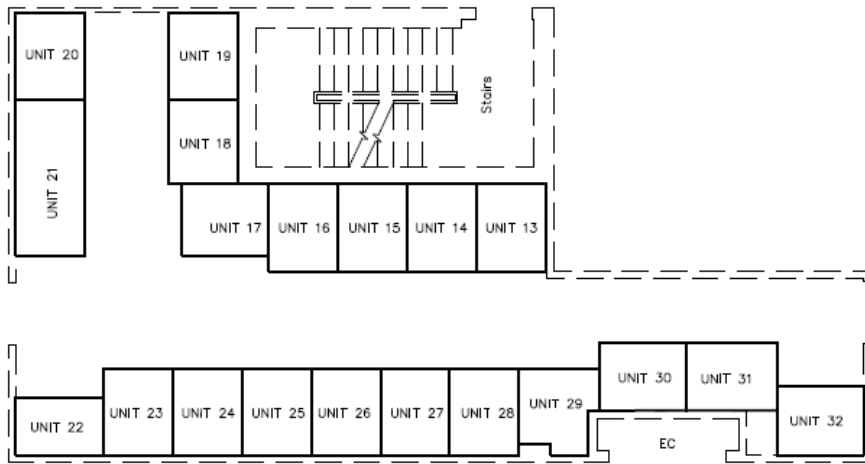
ON THE PARK®

TRIDEL
BUILT FOR LIFE

ROWNTREE
ENTERPRISES

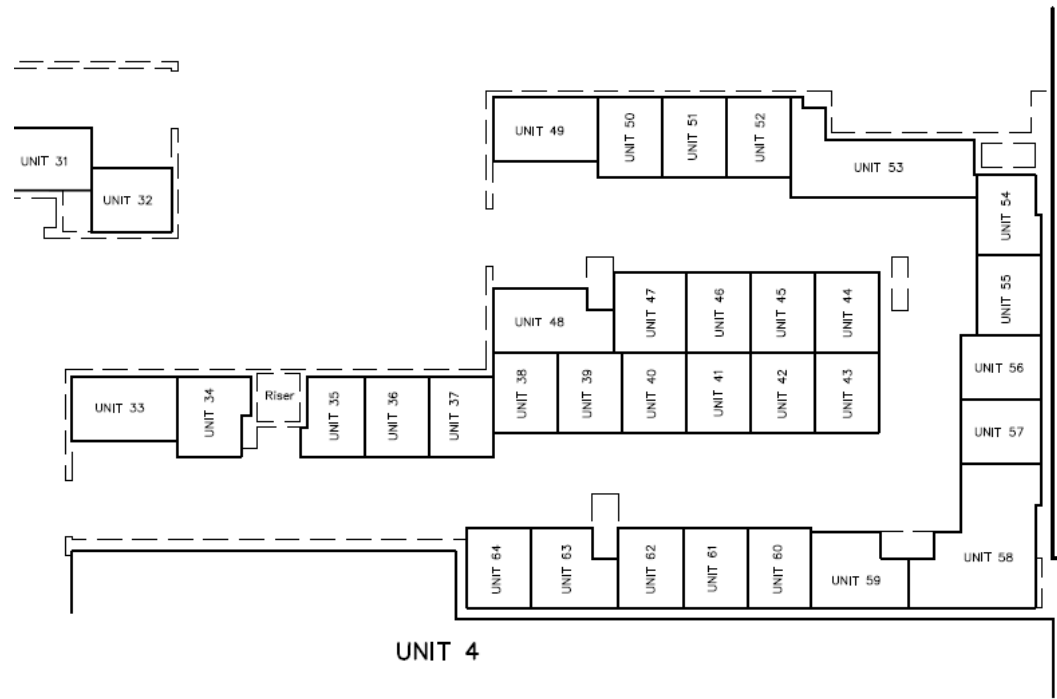
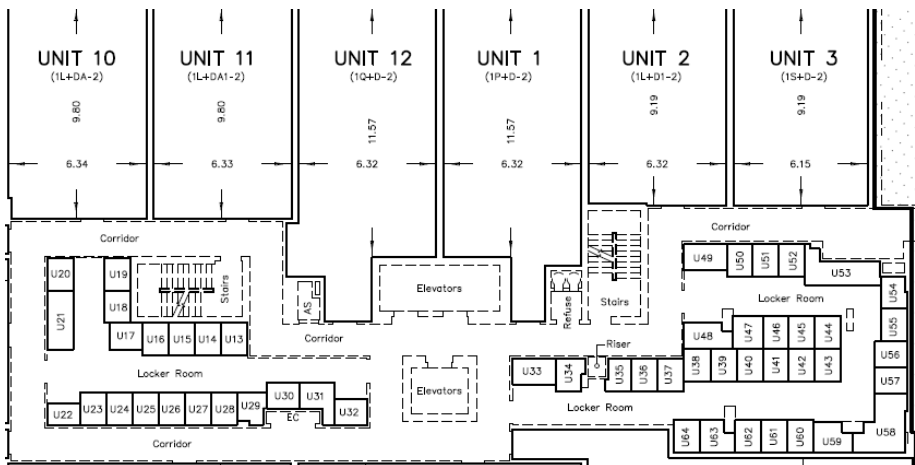
Locker Units - 3rd Floor

Units 13 - 64



ENLARGEMENT OF UNITS 13 TO 32 inclusive

NOT TO SCALE



ENLARGEMENT OF UNITS 33 TO 64 inclusive

NOT TO SCALE

This plan is provided for information purposes only. Parking & Locker unit locations are approximate and subject to change without notice. ©Tridel 2023. ®Tridel and design, "D" design, Tridel Built for Life and design, Built Green Built for Life and design are registered Trademarks of Tridel Corporation. Project names and logos are Trademarks of their respective owners. All rights reserved. Illustrations are artist's concept only. Specifications subject to change without notice. E.&O.E. June 2023

AUBERGE II

ON THE PARK®

TRIDEL
BUILT FOR LIFE

Locker Units - 4th Floor

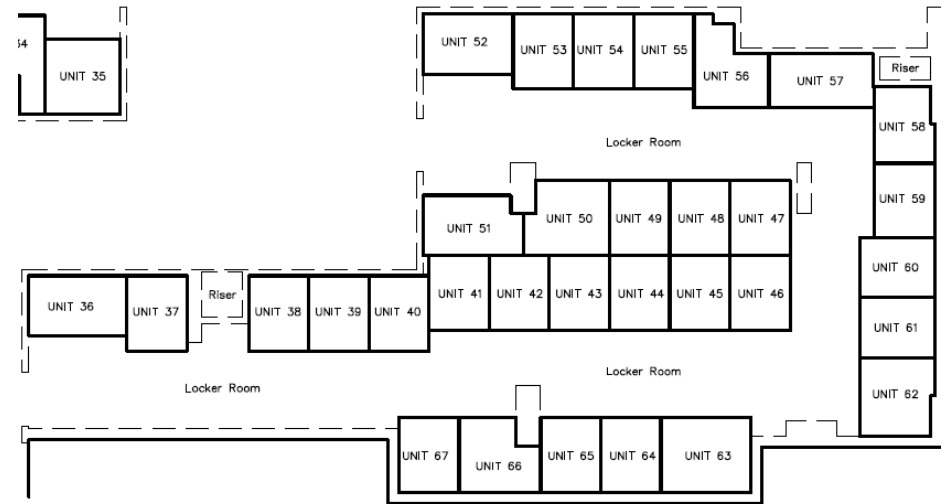
Units 13 - 67

ROWNTREE
ENTERPRISES



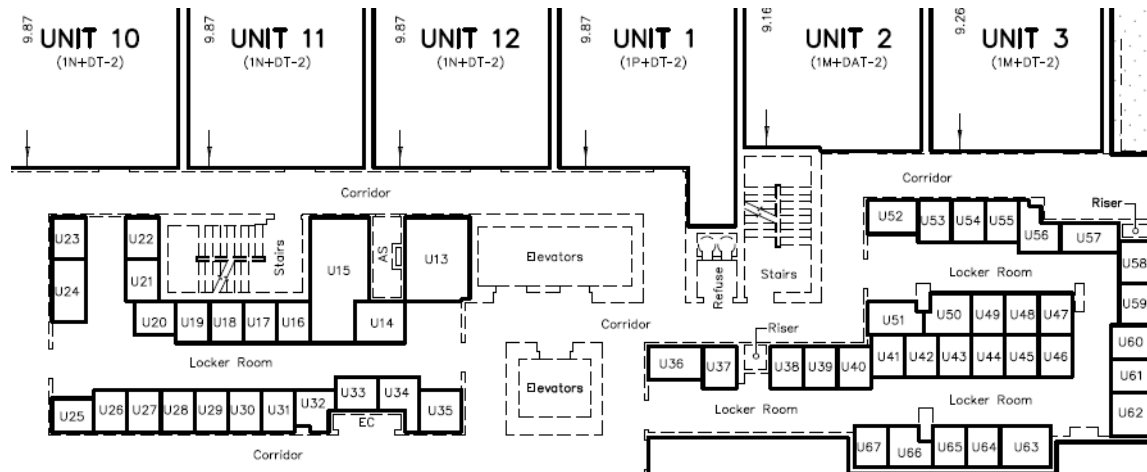
ENLARGEMENT OF UNITS 13 TO 35 inclusive

NOT TO SCALE



ENLARGEMENT OF UNITS 36 TO 67 inclusive

NOT TO SCALE



This plan is provided for information purposes only. Parking & Locker unit locations are approximate and subject to change without notice. ©Tridel 2023. ®Tridel and design, "D" design, Tridel Built for Life and design, Built Green Built for Life and design are registered Trademarks of Tridel Corporation. Project names and logos are Trademarks of their respective owners. All rights reserved. Illustrations are artist's concept only. Specifications subject to change without notice. E.&O.E. June 2023.